



radiant heaters_





radiant heaters_



1

Radiant heating elements provide rapid heating, with optimum energy efficiency. Heat is transferred to the heating recipient by radiation and conduction.

There are three different versions:

- Coil radiant heaters, built with a resistance coil of Cr Fe Al._
- Ribbon radiant heaters. These elements ensure a quick light-up time, in addition to optimum energy efficiency._

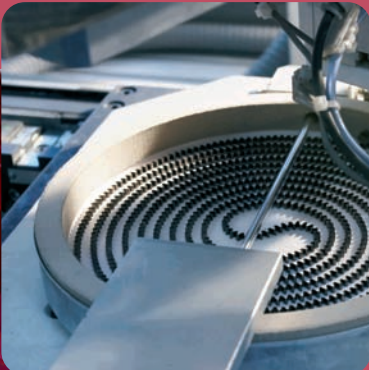


REMARKS_

The insulation materials used in the manufacture of these radiant heating elements are environmentally friendly.

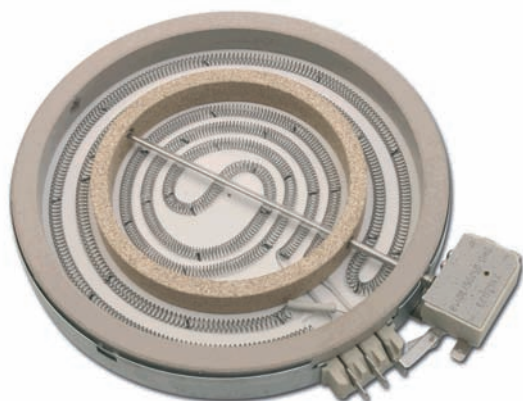
The thermostats fitted to the heating elements are custom-built by the company.

These thermostat can be supplied with or without residual heat indication circuit.





Coil radiant heaters



03 SERIES_

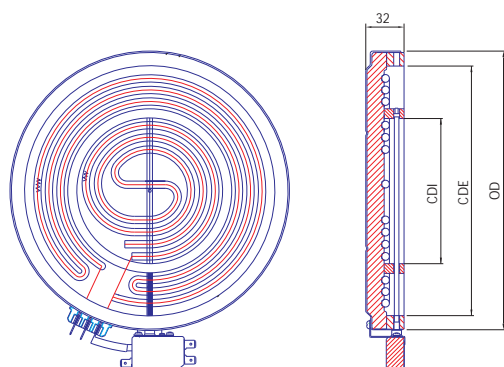
Denomination:
COIL DUAL CIRCUIT CONCENTRIC

Heating element:
COIL

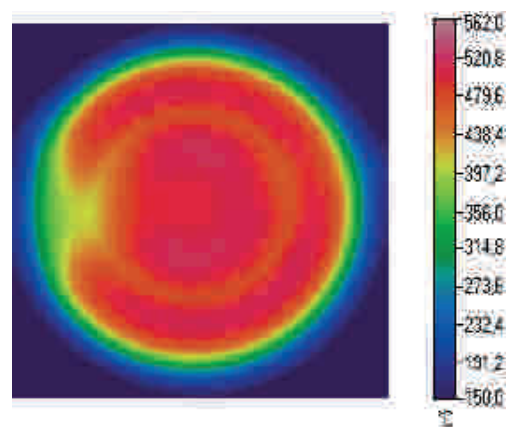
Control:
ENERGY REGULATOR or ELECTRONIC CONTROL

Outside Diameter	Cooking Diameter	Volts		Power (TOT-INT)		Eika Code
		From	To	From	To	
200	180 - 110	200	400	1500-600	1800-800	20103...
230	206 - 120	200	400	2000-600	2300-800	23003...
230	210 - 140	200	400	2000-900	2300-1200	23103...

Dimensions_

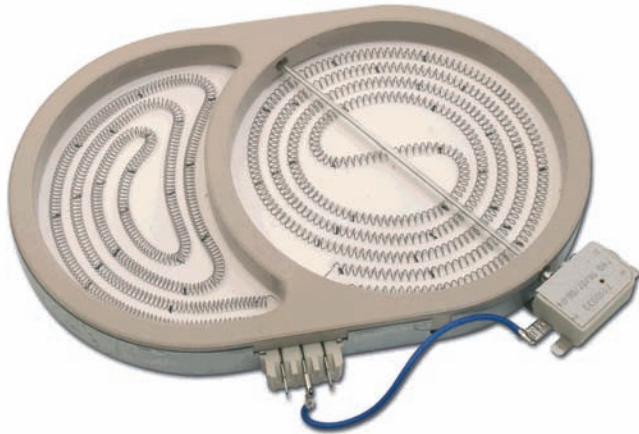


Map of Temperatures_





Coil radiant heaters



04 SERIES_

Denomination:
COIL DUAL CIRCUIT OVAL

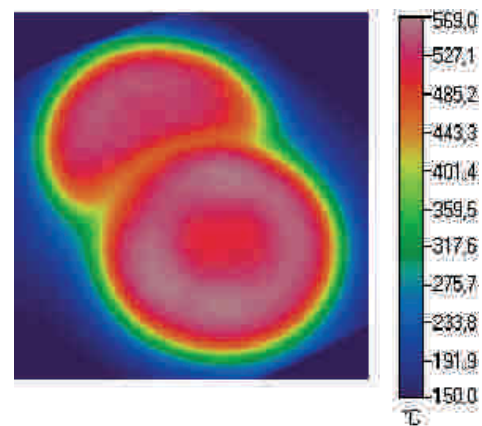
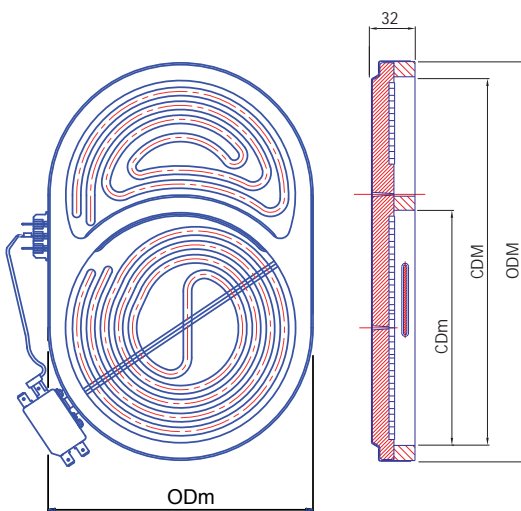
Heating element:
COIL

Control:
ENERGY REGULATOR or ELECTRONIC CONTROL

Outside Dimensions	Cooking Dimensions	Volts		Power (TOT-CIRC)		Eika Code
		From	To	From	To	
ODM x ODm 270 x 165	CDM x CDm 245 x 140	200	400	1800-1000	2000-1200	27004...
285 x 190	265 x 170	200	400	2000-700	2400-900	28504...

Dimensions_

Map of Temperatures_





Coil radiant heaters



06 SERIES_

Denomination:
COIL SINGLE CIRCUIT

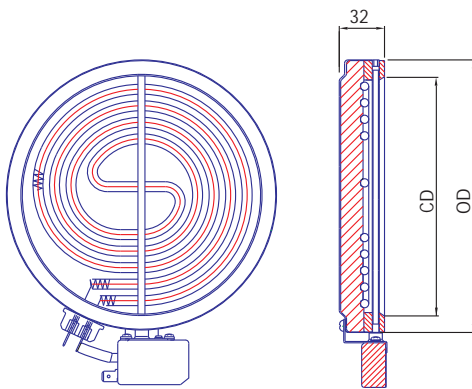
Heating element:
COIL

Control:
ENERGY REGULATOR or ELECTRONIC CONTROL

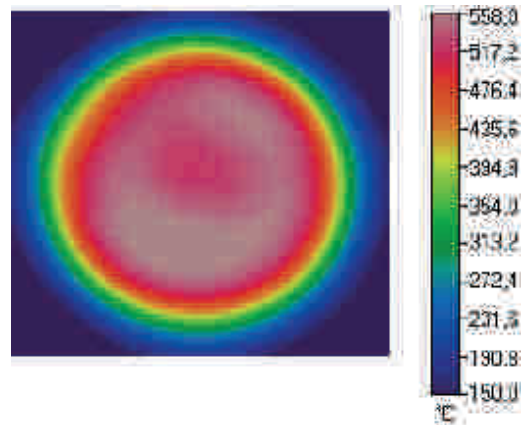
Outside Diameter	Cooking Diameter	Volts		Power		Eika Code
		From	To	From	To	
165	145	200	400	1200	1200	16506...
180	160	200	400	1200	1500	18006...
200	175	200	400	1500	1800	20006...
215	195	200	400	1800	2000	21506...
230	206	200	400	2100	2300	23006...

• UNDER REQUEST

Dimensions_



Map of Temperatures_





Coil radiant heaters



07 SERIES_

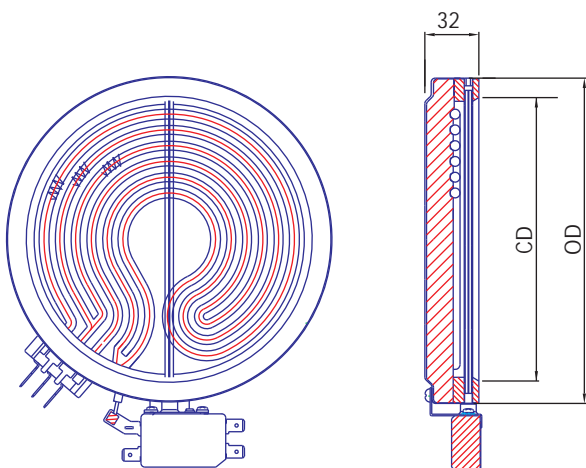
Denomination:
COIL TRIPLE CIRCUIT

Heating element:
COIL

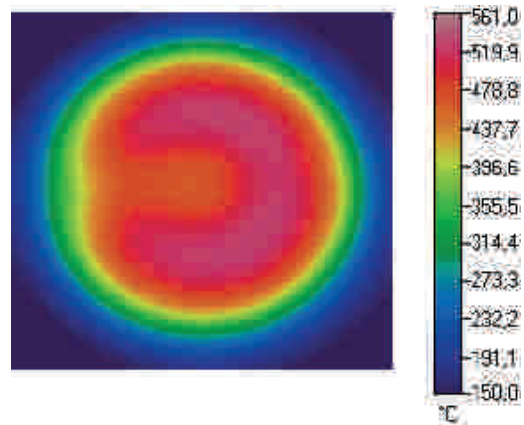
Control:
7 STEP SWITCH

Outside Diameter	Cooking Diameter	Volts		Power		Eika Code
		From	To	From	To	
OD 165	CD 145	230	240	1200	1200	16507...
200	180	230	240	1500	1800	20007...
230	210	230	240	2100	2300	23007...

Dimensions_



Map of Temperatures_





Coil radiant heaters



08 SERIES_

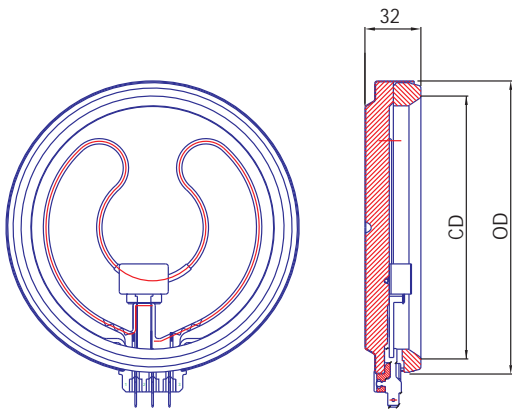
Denomination:
COIL SINGLE CIRCUIT - WARMER -

Heating element:
COIL

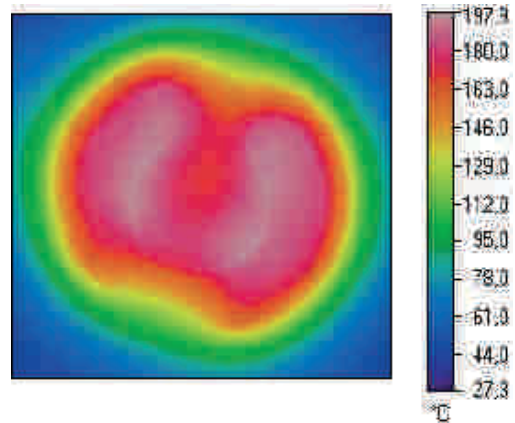
Control:
ENERGY REGULATOR or ELECTRONIC CONTROL

Outside Diameter	Cooking Diameter	Volts		Power		Eika Code
		From	To	From	To	
165	145	120	240	80	140	16508...
180	160	120	240	80	140	18008...

Dimensions_



Map of Temperatures_





Ribbon radiant heaters



20 SERIES_

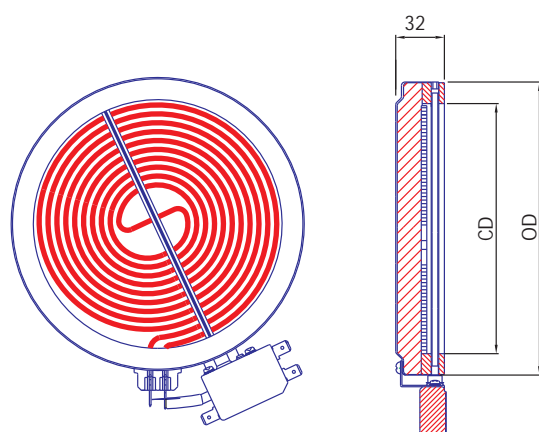
Denomination:
RIBBON SINGLE CIRCUIT

Heating element:
RIBBON

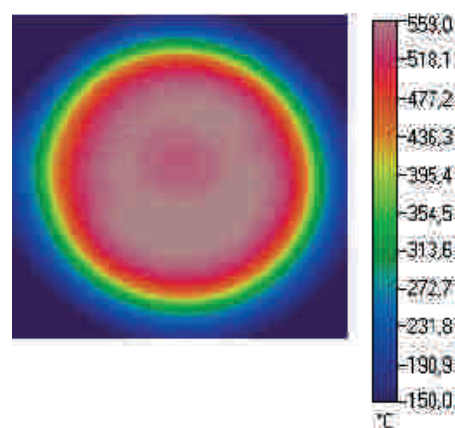
Control:
ENERGY REGULATOR or ELECTRONIC CONTROL

Outside Diameter	Cooking Diameter	Volts		Power		Eika Code
		From	To	From	To	
OD	CD					
120	110	230	230	600	700	12020...
165	140	100	400	1100	1200	16520...
180	155	200	400	1200	1500	18020...
200	175	100	400	1350	2000	20020...
215	190	200	400	1800	2000	21520...
230	206	200	400	2100	2500	23020...
250	225	100	400	2200	3300	25020...
300	270	200	400	2600	3200	30020...

Dimensions_



Map of Temperatures_





Ribbon radiant heaters



23 SERIES_

Denomination:
RIBBON DUAL CIRCUIT CONCENTRIC

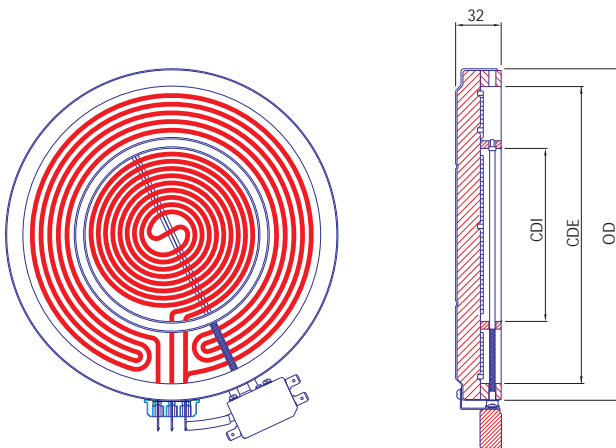
Heating element:
RIBBON

Control:
ENERGY REGULATOR or ELECTRONIC CONTROL

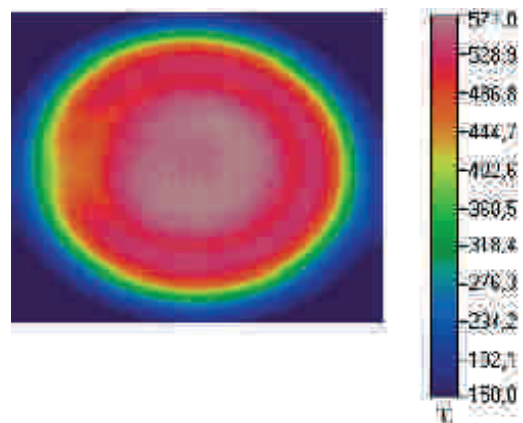
Outside Diameter	Cooking Diameter	Volts		Power (TOT-INT)		Eika Code
		From	To	From	To	
OD	CDE - CDI					
200	175 - 110	200	240	1500-600	2000-850	20123...
200*	175 - 116	200	240	1500-700	2000-850	20223...
215*,**	190 - 120	200	240	1800-700	2000-800	21723...
215**	190 - 136	200	240	1800-900	2000-1000	21623...
215**	190 - 120	200	240	1800-700	2200-800	21523...
230	206 - 120	200	240	2000-650	2200-800	23023...
230	206 - 140	200	240	2000-1000	2200-1200	23123...
230*	206 - 164	200	240	2000-1300	2200-1500	23323...
230*	206 - 140	200	240	2000-1000	2200-1200	23423...
250	225 - 140	230	240	2200-1000	2600-1200	25023...
250*	225 - 152	230	240	2200-1000	3000-1500	25123...
300	270 - 210	230	240	2400-1200	2700-2000	30023...
300*	270 - 210	230	240	2400-1200	3200-2000	30123...

* Without inner ring
** UNDER REQUEST

Dimensions_



Map of Temperatures_





Ribbon radiant heaters



24 SERIES_

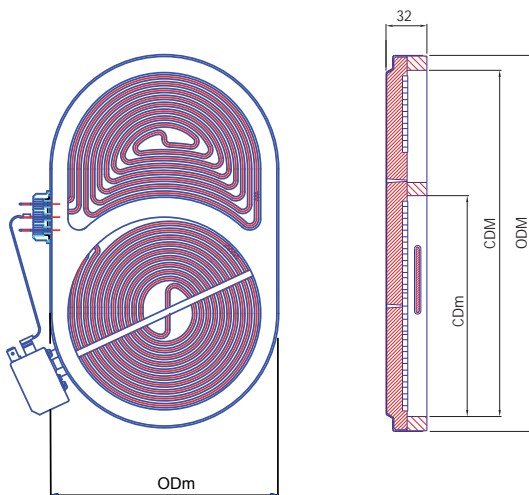
Denomination:
RIBBON DUAL CIRCUIT OVAL

Heating element:
RIBBON

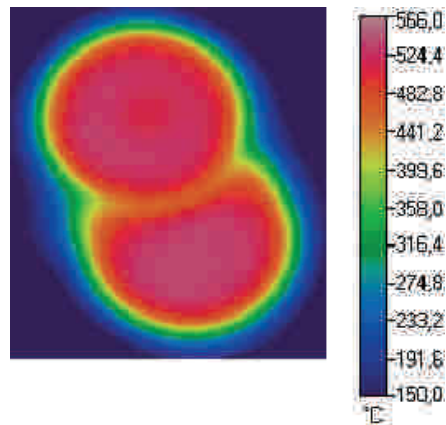
Control:
ENERGY REGULATOR or ELECTRONIC CONTROL

Outside Dimensions	Cooking Dimensions	Volts		Power (TOT-CIRC)		Eika Code
		From	To	From	To	
ODM x ODm	CDM x CDm	200	240	1500-800	2000-1200	27024...
270 x 165	250 x 140	200	240	2000-1200	2400-1600	28524...
285 x 190	265 x 170					

Dimensions_



Map of Temperatures_





Ribbon radiant heaters



24*5 SERIES_

Denomination:
RIBBON TRIPLE CIRCUIT OVAL (BRIDGE)

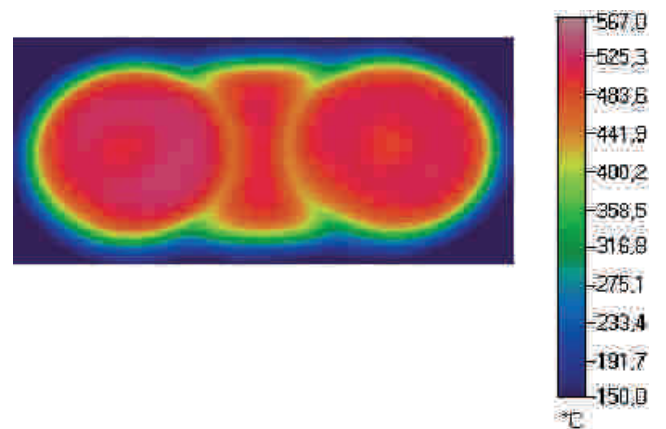
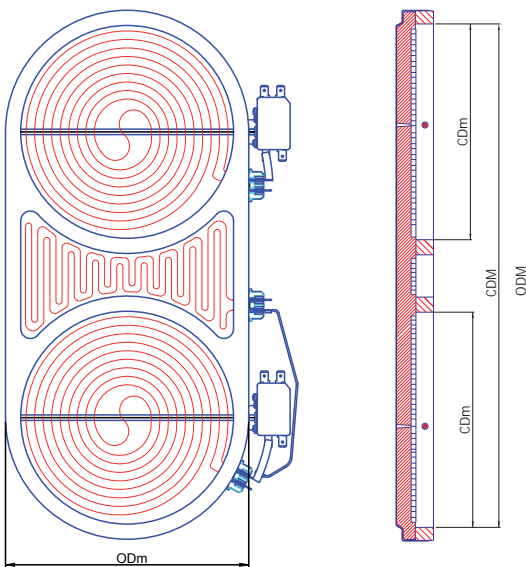
Heating element:
RIBBON

Control:
ENERGY REGULATOR or ELECTRONIC CONTROL

Outside Dimensions	Cooking Dimensions	Volts		Power (TOT-CIRC)		Eika Code
		From	To	From	To	
ODM x ODm	CDM x CDm	240	240	4200-1700	4400-1800	43524...

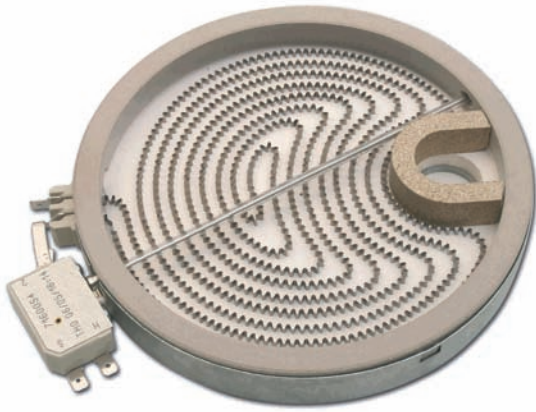
Dimensions_

Map of Temperatures_





Ribbon radiant heaters



26 SERIES_

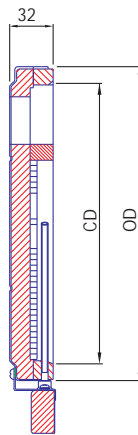
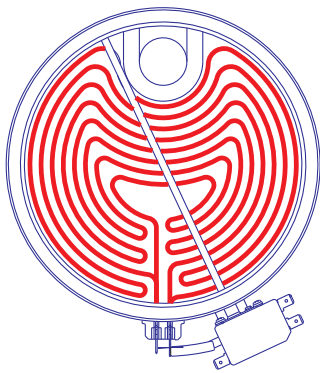
Denomination:
RIBBON SINGLE CIRCUIT

Heating element:
RIBBON

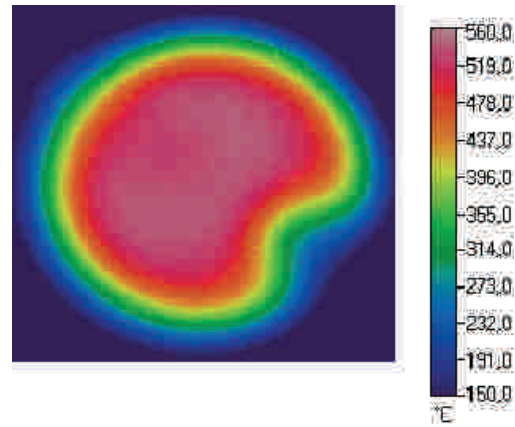
Control:
ENERGY REGULATOR

Outside Dimensions	Cooking Dimensions	Volts		Power (TOT-CIRC)		Eika Code
		From	To	From	To	
ODM x ODM	CDM x CDm					
200	175	100	200	1350	1800	20026...
215	190	200	240	1800	2000	21526...

Dimensions_

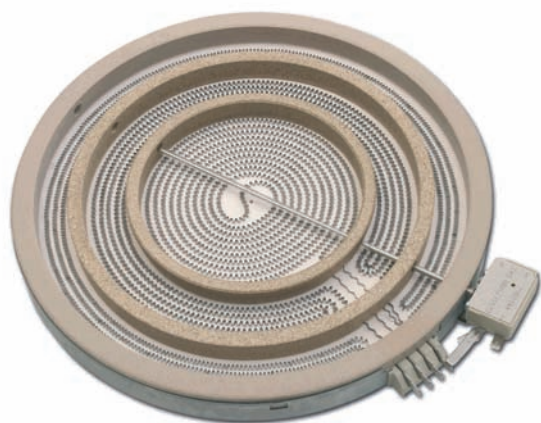


Map of Temperatures_





Ribbon radiant heaters



27 SERIES_

Denomination:
RIBBON TRIPLE CIRCUIT

Heating element:
RIBBON

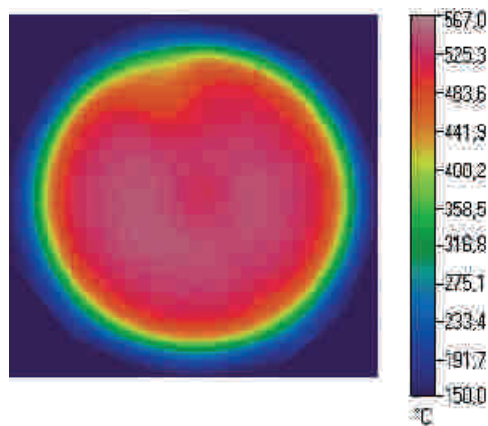
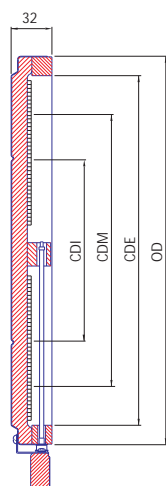
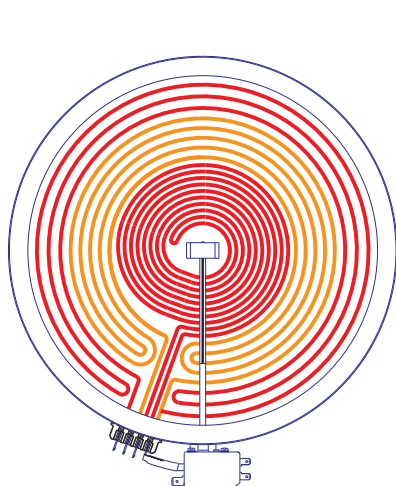
Control:
ENERGY REGULATOR or ELECTRONIC CONTROL

Outside Diameter	Cooking Diameter	Volts		Power (TOT-MED-INT)		EkaCode
		From	To	From	To	
OD 230	CDE - CDM - CDI 206 - 175 - 120	230	240	2300-1600-800	2300-1600-800	23027...
250	225 - 175 - 120	230	240	2500-1600-800	3000-1800-1000	25027...
300*	270 - 210 - 140	230	240	2400-1650-900	3200-2200-1150	30027...
300	270 - 210 - 140	230	240	2400-1650-900	3200-2200-1150	30127...

* With inner rings

Dimensions_

Map of Temperatures_





OPTIONAL FUNCTIONS

Radiant heater with TEMPERATURE SENSOR



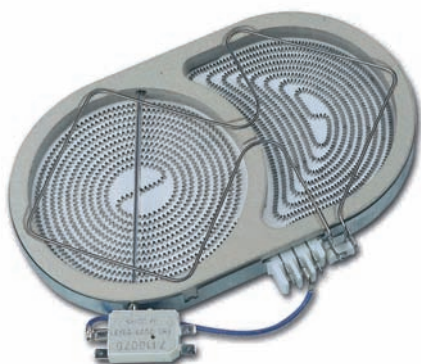
It allows the user to select the operating mode to be used during the cooking process.

The system consists of touch control with special hardware and software for temperature control, using a PT probe mounted in the glass-ceramic heaters.

Specifications:

- Different control for the same temperature selected, depending on the operating mode chosen.
- Greater precision and response time for reaching the selected temperature, avoiding overheating and reducing margins of error.

Radiant heater with PAN DETECTION



It detects the presence of metal pans according to their size.

The system consists of touch control with special hardware and software for the detection function and an inductive sensor mounted between the radiant heaters and the glass.

Specifications:

- Safety: the hob will not operate if there are no pans on the heaters, avoiding any hazardous situations.
- Reduction in energy consumption: no pan, no consumption.
- User convenience.

Special Forms RADIANT HEATERS



Eika can respond to a customer's request by customising radiant heaters in specific shapes that adapt to the final application.

Code system for radiant heaters



1_External diameter of the heater	2_Series	3_Rated voltage	4_Number of ext. con. tabs	5_Limiter type	6_Type of connected tabs	7_Glass Ceramic Surface Temp. °C
1 2 3 (*)	4 5	6	7	8	9	10
165	01	2	4	1	1	0
120	03=Coil Dual Heater	0= 120	2=2 tabs	0=Without thermostat	1= Straight tab (C)	NORMAL HEATERS
165	04=Coil Oval Heater	1= 220	3=3 tabs	3=Bimetallic Eika	2= Vertical-up (G)	0= HITRANS/EUOKERA 530°C
180	06=Coil Single Circuit Spiral	1= 220,230	4=4 tabs	7= Temperature sensor type PT-1000	3= Vertical-down (J)	1= HITRANS/EUOKERA 540°C
200	07=Coil Three Circuits	3= 230	5=5 tabs	8= THO with residual heat circuit	4= Vertical-down double (E)	2= HITRANS/EUOKERA 560°C
200 (80)	08=Warmer	4= 240	6=6 tabs	9= THO without residual heat circuit	5= Vertical-up double (W)	3= HITRANS/EUOKERA 575°C
201 (110)	09=Coil two circuits	5= 380-440			6= 2a straight 1b/2b vertical-down	4= HITRANS/EUOKERA 570°C
201 (116)	18= Warmer low profile	6= 400			Note: by default the terminal used in exists is:	5= HITRANS/EUOKERA 580°C
215	20= Ribbon single circuit	7=200			1= Straight	6= HITRANS/EUOKERA 600°C
215 (120)	23= Ribbon dual heater	8=100			2.5= Vertical-up	7= HITRANS/EUOKERA 520°C
215 (136)	24= Ribbon oval heater	9=110			3.4= Vertical-down	8= HITRANS/EUOKERA 630°C
217 (120)	26= Ribbon single circuit with hole					9= HITRANS/EUOKERA 550°C
230	27= Ribbon triple circuit					HEATERS WITH TEMP. SENSOR
230 (120)	28= Induction warmer					0= CONTROL or CYNTEC
230 (175,120)	80= Booster ribbon					WARMER HEATER
231 (140)						1= AUX. CIRCUIT WITH 1 CONNECTION
232 (136)						2= AUX. CIRCUIT WITH 2 CONNECTIONS
233 (164)						HEATERS WITHOUT TEMPERATURE LIMITER
234 (120)						0=all the models
235 (140)						HEATERS WITH BIMETALLIC THERMOSTAT
250						0=all the modules
250 (140)						
250 (175,120)						
251 (140)						
270						
285						
300 (210)						
300 (210, 140)						
301 (210)						
301 (210, 140)						
400 (190, 136, 348)						
435						
4 ab (rectangular)						

"a" means length of the rectangular heater (outer dimension)
 "b" means the width of the rectangular heater (outer dimension)
 Cooking dimensions: a - 2.4cm or b - 2.4 cm

a or b= 1, means dimensions between 10 and 19 cm
 a or b= 2, means dimensions between 20 and 29 cm
 a or b= 3, means dimensions between 30 and 39 cm
 a or b= 4, means dimensions between 40 and 49 cm



Eika, S. Coop. Urresolo, 47, E-48277 Etxebarria, Bizkaia
Apdo. 20 (PO Box 20), E-48270 Markina, Bizkaia
Tel: + 34 946 167 732 Fax: + 34 946 167 746
eika@eika.es

